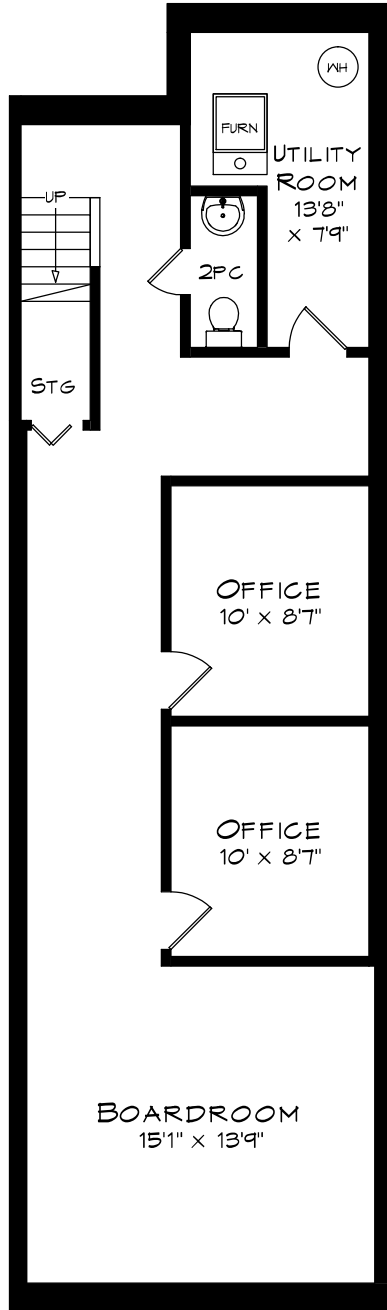
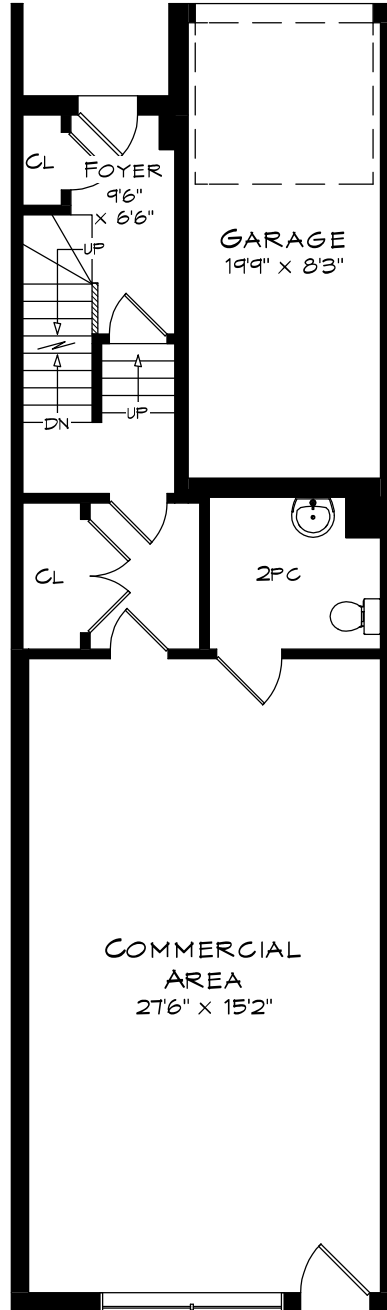


# 96 NELSON STREET UNIT #28

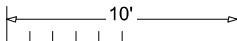
TOTAL SQUARE FOOTAGE  
3,603 SQ.FT.



LOWER LEVEL  
909 SQUARE FEET

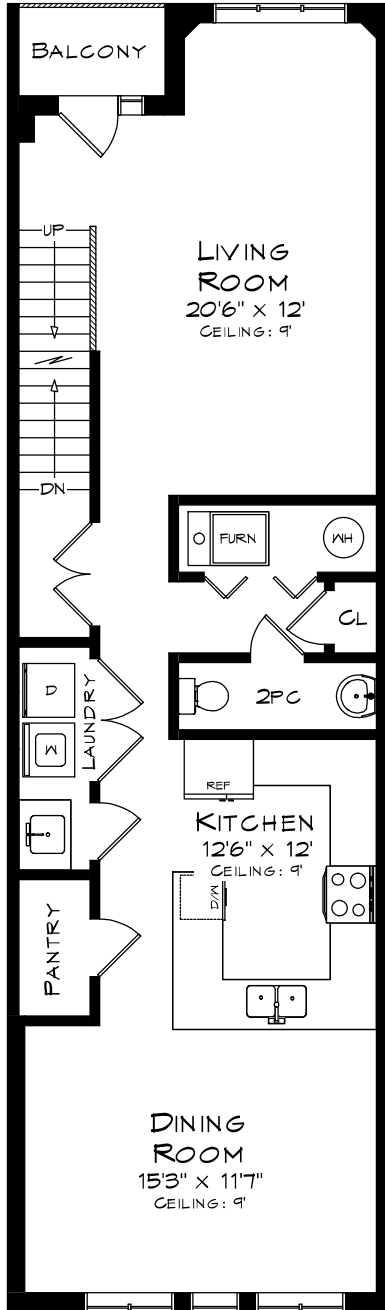


GROUND LEVEL  
76 SQUARE FEET  
+ 645 SF (COMMERCIAL)  
+ 190 SF (GARAGE)

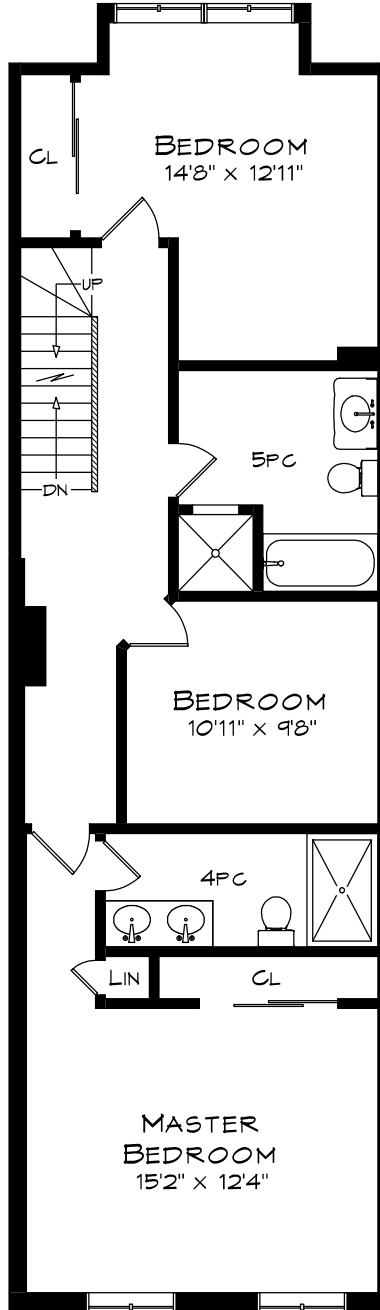


Measurements may not be 100% accurate  
and should be used as a guideline only.  
September - 2019

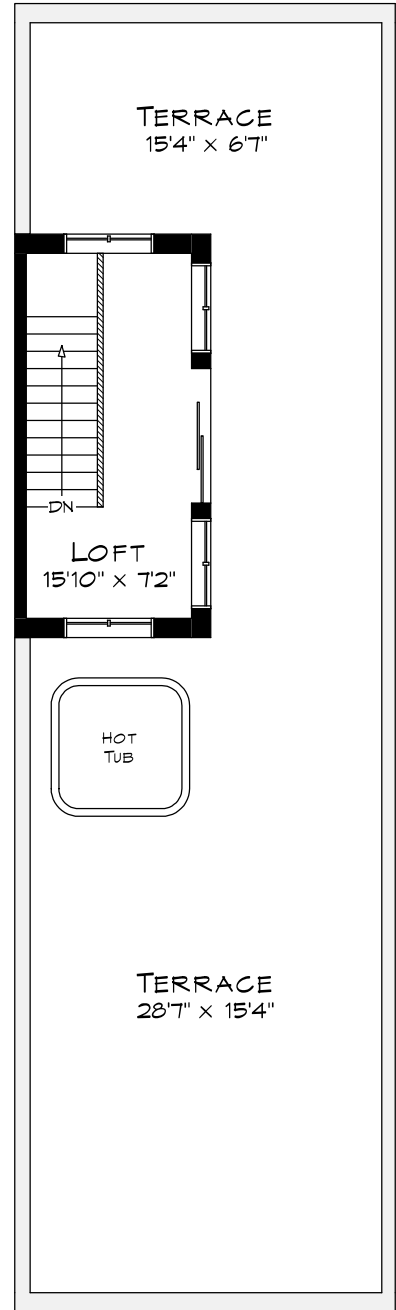
# 96 NELSON STREET UNIT #28



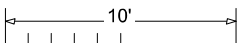
**SECOND LEVEL**  
909 SQUARE FEET



**THIRD LEVEL**  
917 SQUARE FEET



**ROOF-TOP**  
147 SQUARE FEET  
+ 788 SF (TERRACES)



Measurements may not be 100% accurate and should be used as a guideline only.  
September - 2019